



Class I, Divisions 1 and 2, Group D  
Class I, Zones 1 and 2, Group IIA

American  
Bureau of  
Shipping

INDEECO's COMPACT explosion-proof unit heater is designed with both size and economy in mind. COMPACT advantages and unique features include:

- **Compact Size:** This small design is only 13 inches wide, which makes it ideal for applications where limited space is available.
- **Low Cost:** The COMPACT design offers the most economical solution for heating small Class I, Group D hazardous areas. It is a cost effective alternative to the use of explosion-proof convection heaters.
- **Redundant Overtemperature Protection:** Primary and secondary automatic reset thermal cutouts for additional safety.
- **Stainless Steel Construction:** Provides superior corrosion resistant protection. Optional Dirty Duty construction adds polyester powder coating to all aluminum parts for use in corrosive applications.
- **Optional Marine Duty Construction:** The COMPACT design is ideal for shipboard use where size, weight and corrosion resistant construction are critical.

#### Applications

- Chemical Storage/ Handling Areas
- Compressor Stations
- Marine and Offshore
- Oil Platforms and Refineries
- Sewage/Wastewater Treatment Plants
- Spray Booths

## Standard Construction Features

**Heating Elements** – Industrial grade, Type 304 stainless steel finned tubular heating elements are manufactured by INDEECO.

**Terminal Enclosure** – A NEMA 7, 9 cast aluminum enclosure with a threaded bottom cover permits easy access to the built-in controls from underneath the heater.

**Housing** – Round, 16-gauge stainless steel shroud.

**Grilles** – An adjustable stainless steel louvered outlet grille directs airflow 45° up or down and a heavy gauge stainless steel rear grille protects against accidental contact with the fan blade.

**Stainless Steel Swivel Mounting Bracket** – Supplied as standard with all COMPACT explosion-proof unit heaters. This multi-purpose bracket can be used for either wall or ceiling mounting.

**Built-In Controls** – Include primary and secondary automatic reset overtemperature cutouts, controlling contactor, and a time delay relay which keeps the fan running to cool the heating elements after they have been de-energized.

**Fan Motor Assembly** – Consists of a 120-volt, 1-phase 60 hertz motor fitted with an aluminum fan blade. The totally enclosed motor is UL Listed for Class I, Group D applications and includes permanently lubricated ball bearings and built-in thermal overload protection. The motor is factory wired into the enclosure to reduce field wiring, but requires a separate 120-volt power supply.

# COMPACT UNIT HEATER

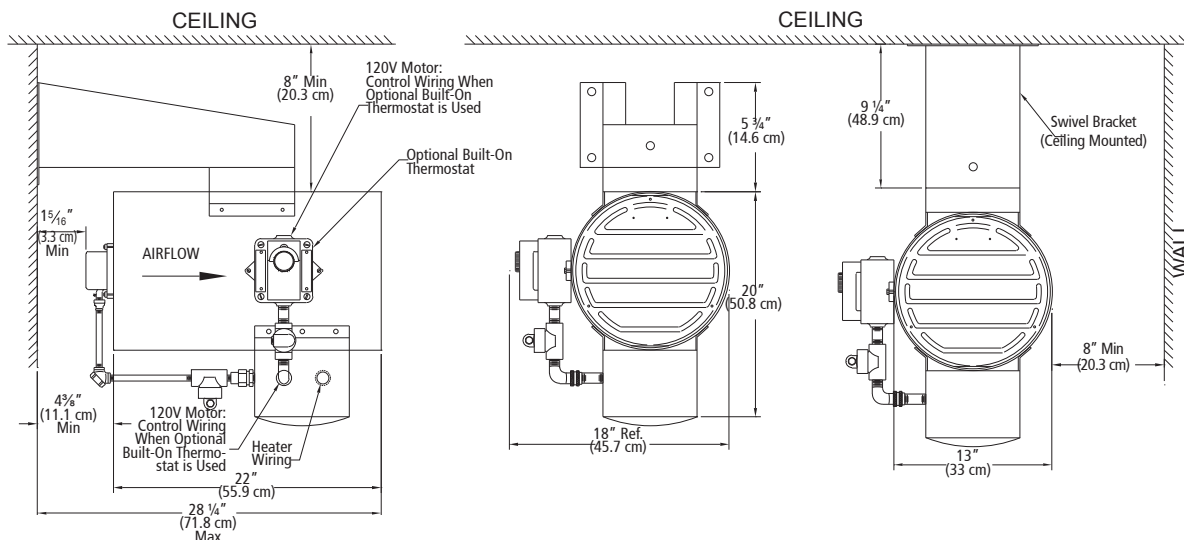
## Custom Options

| Code | Option                                      | Description  | Availability Code (2) |
|------|---|--|-----------------------|
| C    | Dirty Duty Corrosion Resistant Construction | Includes polyester powder coated fan blade, wiring conduit and fittings, NEMA 4X, 7, 9 enclosure.                                  | C                     |
| CM   | Marine Duty Construction                    | Dirty Duty Construction with manual reset thermal cutout. Meets U.S. Coast Guard requirements per 46CFR-111.87 and is ABS Approved | C                     |
| M    | Manual Reset Cutout                         | Can be specified to replace secondary automatic cutout.  | C                     |
| T    | Adjustable Thermostat                       | Factory installed and prewired to the control enclosure. Thermostat is adjustable from 50° to 90°F (10° to 32°C) range.            | C                     |

(2) AS = Assembly Stock, C = Custom Assembly Stock heaters ordered with custom options are subject to longer delivery.

## Dimensions, Airflows and Weights

| KW                                       |                                  | 3           | 5           | 7           | 10          | 12          |
|--|----------------------------------|-------------|-------------|-------------|-------------|-------------|
| Ignition Temperature Code                |                                  | T3          | T2C         | T2          | T1          | T1          |
| Approximate Air Temperature Rise °F (°C) |                                  | 9 (5)       | 15 (8)      | 22 (12)     | 31 (17)     | 37 (21)     |
| Airflow Characteristics                  | Air Volume CFM (cubic meters/hr) | 1050 (1784) | 1050 (1784) | 1050 (1784) | 1050 (1784) | 1050 (1784) |
|  | Air Throw Feet (m)               | 25 (8)      | 25 (8)      | 25 (8)      | 25 (8)      | 25 (8)      |
|  | Outlet Velocity FPM (meters/min) | 1140 (348)  | 1140 (348)  | 1140 (348)  | 1140 (348)  | 1140 (348)  |
| Motor/Fan                                | RPM                              | 1725        | 1725        | 1725        | 1725        | 1725        |
|  | HP                               | 1/6         | 1/6         | 1/6         | 1/6         | 1/6         |
|  | Fan Blade Dia. Inch (cm)         | 12 (31)     |             |             |             |             |
| Weight                                   | Net Lbs (kgs)                    | 96 (44)     |             |             |             |             |
|  | Shipping Lbs (kgs)               | 110 (50)    |             |             |             |             |



Standard Wall and Ceiling Installation with Swivel Mounting Bracket

Remote Room Thermostat – Use catalog number 1007002. See page 98.

## COMPACT Unit Heater Listing

Class I, Divisions 1 and 2, Group D  
Class I, Zones 1 and 2, Group IIA

| Ignition Temperature Code °F (°C) | KW | Volts | Phase | Heater Amps (1) | Catalog Number      | Availability Code (2) |
|-----------------------------------|----|-------|-------|-----------------|---------------------|-----------------------|
| T3<br>392 (200)                   | 3  | 208   | 1     | 14.5            | 236-F01T-0037C-7000 | C                     |
|                                   |    | 240   | 1     | 12.5            | 236-F01T-0037J-7001 | C                     |
|                                   |    | 480   | 1     | 6.3             | 236-F01T-0037T-7002 | C                     |
|                                   |    | 208   | 3     | 8.4             | 236-F01T-0037D-7003 | C                     |
|                                   |    | 240   | 3     | 7.3             | 236-F01T-0037K-7004 | C                     |
|                                   |    | 480   | 3     | 3.7             | 236-F01T-0037U-7005 | C                     |
|                                   |    | 600   | 3     | 2.9             | 236-F01T-0037Z-7006 | C                     |
| T2C<br>446 (230)                  | 5  | 208   | 1     | 24.1            | 236-F01T-0055C-7007 | C                     |
|                                   |    | 240   | 1     | 20.9            | 236-F01T-0055J-7008 | C                     |
|                                   |    | 480   | 1     | 10.5            | 236-F01T-0055T-7009 | C                     |
|                                   |    | 208   | 3     | 13.9            | 236-F01T-0055D-7010 | C                     |
|                                   |    | 240   | 3     | 12.1            | 236-F01T-0055K-7011 | C                     |
|                                   |    | 480   | 3     | 8.1             | 236-F01T-0055U-7012 | C                     |
|                                   |    | 600   | 3     | 4.9             | 236-F01T-0055Z-7013 | C                     |
| T2<br>572 (300)                   | 7  | 208   | 1     | 33.7            | 236-F01T-0072C-7021 | C                     |
|                                   |    | 240   | 1     | 29.2            | 236-F01T-0072J-7022 | C                     |
|                                   |    | 480   | 1     | 14.6            | 236-F01T-0072T-7023 | C                     |
|                                   |    | 208   | 3     | 19.5            | 236-F01T-0072D-7024 | C                     |
|                                   |    | 240   | 3     | 16.9            | 236-F01T-0072K-7025 | C                     |
|                                   |    | 480   | 3     | 8.5             | 236-F01T-0072U-7026 | C                     |
|                                   |    | 600   | 3     | 6.8             | 236-F01T-0072Z-7027 | C                     |
| T1<br>842 (450)                   | 10 | 240   | 1     | 41.7            | 236-F01T-0101J-7035 | C                     |
|                                   |    | 480   | 1     | 20.9            | 236-F01T-0101T-7036 | C                     |
|                                   |    | 208   | 3     | 27.8            | 236-F01T-0101D-7037 | C                     |
|                                   |    | 240   | 3     | 24.1            | 236-F01T-0101K-7038 | C                     |
|                                   |    | 480   | 3     | 12.1            | 236-F01T-0101U-7039 | C                     |
|                                   |    | 600   | 3     | 9.7             | 236-F01T-0101Z-7040 | C                     |
| T1<br>842 (450)                   | 12 | 480   | 1     | 25.0            | 236-F01T-0121T-7041 | C                     |
|                                   |    | 240   | 3     | 29.0            | 236-F01T-0121K-7042 | C                     |
|                                   |    | 480   | 3     | 14.5            | 236-F01T-0121U-7043 | C                     |
|                                   |    | 600   | 3     | 11.6            | 236-F01T-0121Z-7044 | C                     |



American Bureau of Shipping

(1) The amps shown are for the heating elements only. The 120V, 1 Ph 60 Hz motor draws 3.8 amps and requires a separate 120V power supply.

(2) Availability Code: C = Custom