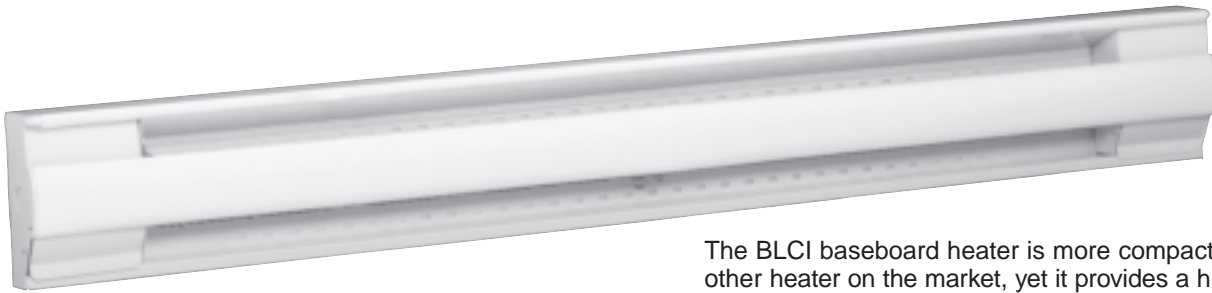


SERIES **BLCI**  
Baseboard Heater



Applications

- Offices
- Retail Stores
- Restrooms
- Restaurants

The BLCI baseboard heater is more compact than any other heater on the market, yet it provides a high level of performance and strength. The unit's trim design enhances its appearance and rounded corners eliminate the sharp edges found on square heaters.

- **Easy to Install:** Heaters may be mounted flush on any floor surface. Two rows of mounting holes are spaced at one-inch intervals along the back of the cabinet for ease of installation.
- **Electric Receptacles:** Units can be furnished with built-on 120 and 240-volt receptacles to provide access for other electrical appliances.
- **Control Options:** Heaters can be controlled by a building management system with the addition of a low voltage relay. Adding a proportional control device provides precise temperature control and increased energy savings.

---

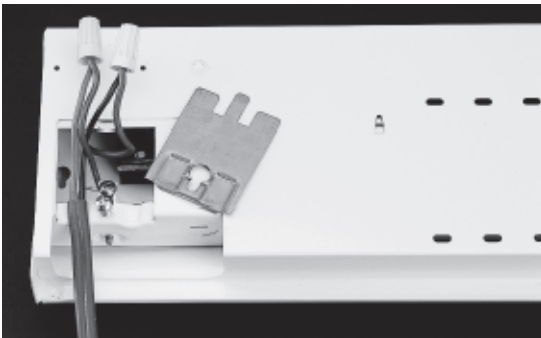
## Standard Construction Features

**Heating Elements** – Stainless steel elements with aluminum fins float on high temperature nylon bushings for quiet operation.

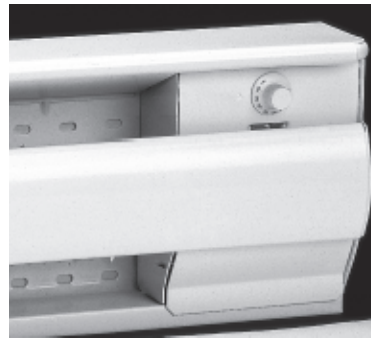
**Housing** – Cabinet body and front panel are constructed of 22-gauge steel, with a polyester powder

paint finish in white or almond. This finish can be covered with interior paint to coordinate with any decor. All units have rounded upper corners.

**Built-in Controls** – Linear limit, automatic reset thermal cutout.



A large access compartment and a single-screw connector allows for more flexibility when connecting the baseboard.



The optional built-in thermostat can be easily installed at either end.

## Baseboard Heater

### Factory Built-in Options

Code	Description
D3	Disconnect Switch, 277V, Double-pole, 20 Amp
D1	Disconnect Switch, 600V, Three-pole, 40 Amp
M1	High Altitude Automatic Cutout
R1	24V Relay, Single-pole, 240V, 22 Amp; 277V, 19 Amp
R2	24V Relay with Transformer, 240V, 22 Amp; 277V, 19 Amp
R7	Triac Proportional Relay, 277V Max, 2500 W Max.
T1	Tamperproof Thermostat, Single-pole, 277V, 17 Amp
T2	Tamperproof Thermostat, Double-pole, 277V, 17 Amp
T3	Adjustable Thermostat, Single-pole, 277V, 17 Amp
T4	Adjustable Thermostat, Double-pole, 277V, 17 Amp
T5	Adjustable Thermostat, Single-pole, 600V, 25 Amp
T6	Adjustable Thermostat, Double-pole, 600V, 25 Amp

**Remote Room Thermostat – See page 99**

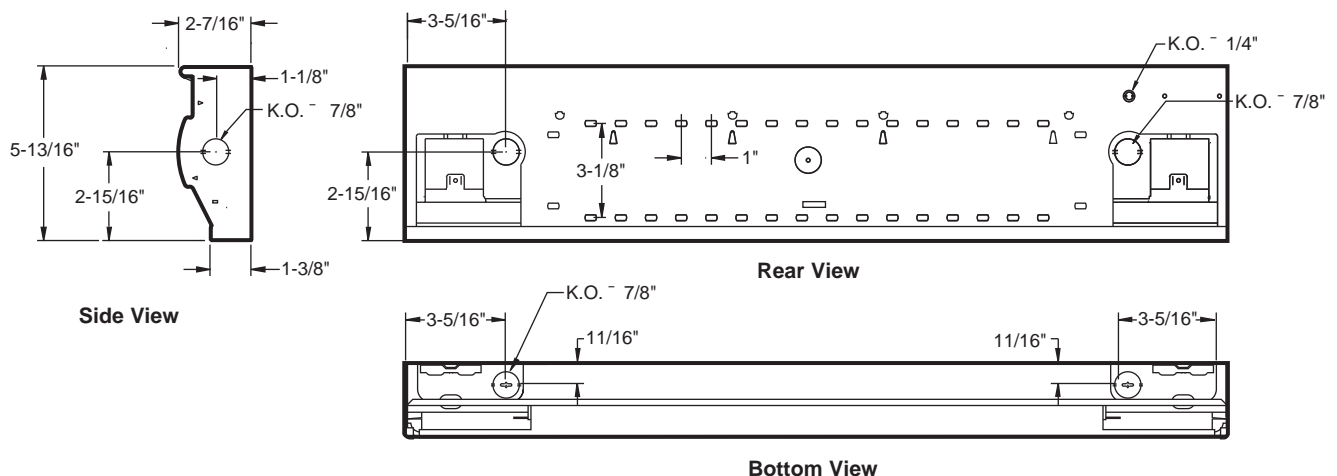
### Field-Installed Options

(shipped loose for field installation into heater)

Catalog Number	Description
902-124573	24V Relay Kit, 240V, 200 Amp; 277V, 19 Amp
902-124574	24V Relay Kit with Transformer, 120V, 25 Amp
902-124575	24V Relay Kit with Transformer, 208V, 22 Amp
902-124576	24V Relay Kit with Transformer, 240V, 22 Amp
902-124577	24V Relay Kit with Transformer, 277V, 19 Amp
902-124578	Adjustable Thermostat Kit, Single-pole, 17 Amp
902-218359	Tamperproof Thermostat Single-pole, 17 Amp
902-124579	Adjustable Thermostat Kit, Double-pole, 17 Amp
902-218360	Tamperproof Thermostat, Double-pole, 17 Amp
902-124580	Adjustable Thermostat Kit, Single-pole, 25 Amp
902-124581	Adjustable Thermostat Kit, Double-pole, 25 Amp
902-124582	Universal Corners (inside and outside)
902-124583	Splice Plate
902-158473	6" Blank Relay Section (relay not included)
902-158474	240V Transfer Switch Mounted in 6" Blank Section (20 Amp Switch, DPDT)
902-158475	240V Transfer Switch with 6-40R Receptacle Mounted in 6" Blank Section (20 Amp Switch, DPDT)
902-158476	Surface Mounted 6-20R Receptacle 240V Mounted in 6" Blank Section
902-158477	Surface Mounted 5-15R Duplex Receptacle 120V Mounted in 6" Blank Section
902B-XXX	Blank Section (specify length in inches-XXX)

**Standard colors - Add W for white finish or A for almond finish to the end of part number.**

Special or custom colors - See inside back cover for color codes to be added to end of part number.



# Baseboard Heater

## Heater Listing

How to order: Heater Code with color code + Options (example 902U00750BW-1206-T3)

### Standard Watt Density Models 275 W/ft. (900 W/m)

Length In. (mm)	Watts	Heater Code						Watts at 240/208V	Heater Code		Weight Lbs (kg)
		120V (1 Ph)	Amps	208V (1 Ph)	Amps	277V (1 Ph)	Amps		240/208V (1 Ph)	Amps	
22.3 (566)	300	902U00300B‡	2.5	902U00300C‡	1.4	—	1.1	300/225	902U00300V‡	1.3/1.1	4.5 (2.0)
27.2 (691)	500	902U00500B‡	4.2	902U00500C‡	2.4	902U00500N‡	1.8	500/375	902U00500V‡	2.1/1.8	5.5 (2.5)
37.2 (945)	750	902U00750B‡	6.3	902U00750C‡	3.6	902U00750N‡	2.7	750/563	902U00750V‡	3.1/2.7	7.3 (3.3)
47.5 (1206)	1000	902U01000B‡	8.3	902U01000C‡	4.8	902U01000N‡	3.6	1000/750	902U01000V‡	4.2/3.6	9.0 (4.0)
57 (1447)	1250	902U01250B‡	10.4	902U01250C‡	6.0	902U01250N‡	4.5	1250/938	902U01250V‡	5.2/4.5	10.5 (4.8)
65.7 (1668)	1500	902U01500B‡	12.5	902U01500C‡	7.2	902U01500N‡	5.4	1500/1125	902U01500V‡	6.3/5.4	12.0 (5.5)
75 (1905)	1750	—	—	902U01750C‡	8.4	902U01750N‡	6.3	1750/1313	902U01750V‡	7.3/6.3	13.5 (6.2)
83.8 (2128)	2000	—	—	902U02000C‡	9.6	902U02000N‡	7.2	2000/1500	902U02000V‡	8.3/7.2	15.0 (6.8)
92.6 (2353)	*2250	—	—	902U02250C‡	10.8	902U02250N‡	8.1	*2250/1688	902U02250V‡	9.4/8.1	16.5 (7.5)
101.8 (2585)	*2500	—	—	902U02500C‡	12.0	902U02500N‡	9.0	*2500/1875	902U02500V‡	10.4/9.0	18.0 (8.2)

### Low Watt Density Models 200 W/ft. (650 W/m)

Length In. (mm)	Watts	Heater Code						Watts at 240/208V	Heater Code		Weight Lbs (kg)
		120V (1 Ph)	Amps	208V (1 Ph)	Amps	277V (1 Ph)	Amps		240/208V (1 Ph)	Amps	
27.2 (691)	300	902U00300B‡-691	2.5	902U00300C‡-691	1.4	902U00300N‡-691	1.1	300/225	902U00300V‡-691	1.3/1.1	5.5 (2.5)
37.2 (945)	500	902U00500B‡-945	4.2	902U00500C‡-945	2.4	902U00500N‡-945	1.8	500/375	902U00500V‡-945	2.1/1.8	7.3 (3.3)
47.5 (1206)	750	902U00750B‡-1206	6.3	902U00750C‡-1206	3.6	902U00750N‡-1206	2.7	750/563	902U00750V‡-1206	3.1/2.7	9.0 (4.0)
57 (1447)	1000	902U01000B‡-1447	8.3	902U01000C‡-1447	4.8	902U01000N‡-1447	3.6	1000/750	902U01000V‡-1447	4.2/3.6	10.5 (4.8)
65.7 (1668)	1250	902U01250B‡-1668	10.4	902U01250C‡-1668	6.0	902U01250N‡-1668	4.5	1250/938	902U01250V‡-1668	5.2/4.5	12.0 (5.5)
83.8 (2128)	1500	902U01500B‡-2128	17.5	902U01500C‡-2128	7.2	902U01500N‡-2128	5.4	1500/1125	902U01500V‡-2128	6.3/5.4	15.0 (6.8)
92.6 (2353)	1750	—	—	902U01750C‡-2353	8.4	902U01750N‡-2353	6.3	*1750/1313	902U01750V‡-2353	7.3/6.3	16.5 (7.5)
101.8 (2585)	*2000	—	—	902U02000C‡-2585	9.6	902U02000N‡-2585	7.2	*2000/1500	902U02000V‡-2585	8.3/7.2	18.0 (8.2)
101.8 (2585)	*2250	—	—	902U02250C‡-2585	10.8	902U02250N‡-2585	8.1	*2250/1688	902U02250V‡-2585	9.4/8.1	18.0 (8.2)

Other single-phase voltages available, consult factory.

‡Standard colors - Add W for white finish or A for almond finish to the catalog number when ‡ is indicated.

Special or custom colors - See inside back cover for color codes to be added to the catalog number where ‡ is indicated.

(\*) These items must be ordered in pairs to reduce shipping damage.