



Industrial Engineering & Equipment Co, Inc.
 425 Hanley Industrial Court
 St. Louis, MO 63144 USA
 Phone: (314) 644-4300 Fax: (314) 644-5332
 www.indeeco.com

Light Duty Unit Heater
 ULI Series

Submittal Sheet

Job Name: _____
Location: _____
Architect: _____
Engineer: _____
Contractor: _____
Submitted By: _____
Date: _____

Heater Selection Chart:

| Item No. | Qty. | Catalog Number | Tag | kW | Volts | Ph. | Amps | Weight | Custom Option Code - Description |
|----------|------|----------------|-----|----|-------|-----|------|--------|----------------------------------|
| | | | | | | | | | |
| | | | | | | | | | |
| | | | | | | | | | |
| | | | | | | | | | |
| | | | | | | | | | |
| | | | | | | | | | |
| | | | | | | | | | |
| | | | | | | | | | |
| | | | | | | | | | |
| | | | | | | | | | |

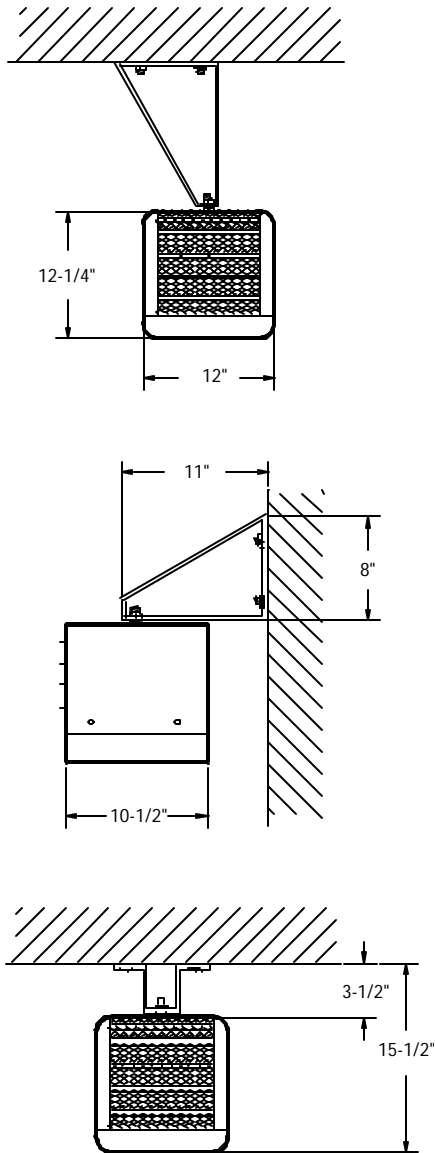
Accessories to Ship Loose:

| Item No. | Qty. | Part Number | Description | Tag |
|----------|------|-------------|-------------|-----|
| | | | | |
| | | | | |
| | | | | |
| | | | | |

| Submitted By | Date | Approved By | Date |
|--------------|------|-------------|------|
| | | | |
| | | | |
| | | | |
| | | | |

| Catalog Number | Volts | Watts | Weight lbs (kg) | Total Amps* |
|----------------|---------|-----------|-----------------|-------------|
| 924C03000VA | 240/208 | 3000/2250 | 20 (9) | 12.9/11.2 |
| 924C05000VA | 240/208 | 5000/3750 | 20 (9) | 21.2/18.4 |

*Total Amps includes motor amps.
All models listed are single phase.



Architect's and Engineer's Specifications

The specified heating equipment shall include an electric, fan-forced air unit heater suitable for space heating as manufactured by INDEECO. The light duty unit heater shall be designed for mounting in the horizontal position. Heaters shall be third party approved to CSA standards. Reference: UL standard 2021.

Heating Housing shall be made from 20 gauge steel. Individual adjustable louvers with 30 degree downward stops shall be furnished to provide the desired control of discharge air. Cabinet finish shall be an almond epoxy/polyester powder paint. Mounting brackets designed for either ceiling or wall mounting shall be furnished as shown. Housing shall include an outlet protective screen. Screen shall prohibit debris from reaching the element compartment.

Heater Elements shall be stainless steel and located downstream of the motor and fan blade for uniform heating and to eliminate hot spots.

Fan and Motor shall be permanently lubricated and totally enclosed. Fan and motor shall be located upstream of heating elements. This location allows the motor to run cooler and have a longer life expectancy. The motor shall be thermally protected. Fan shall operate at 300 CFM minimum.

Thermal Cutout shall be built-in to every heater and wired for instantaneous de-energizing of the heating elements.

Thermostat shall be built-in to heater and adjustable from 50-109 °F through main control compartment.