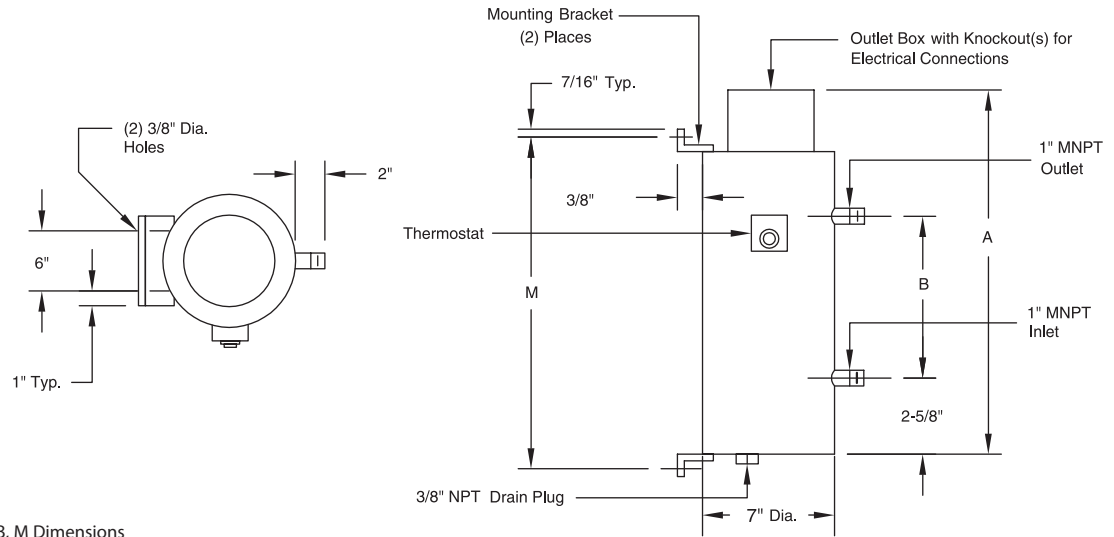


# Circulation Heaters

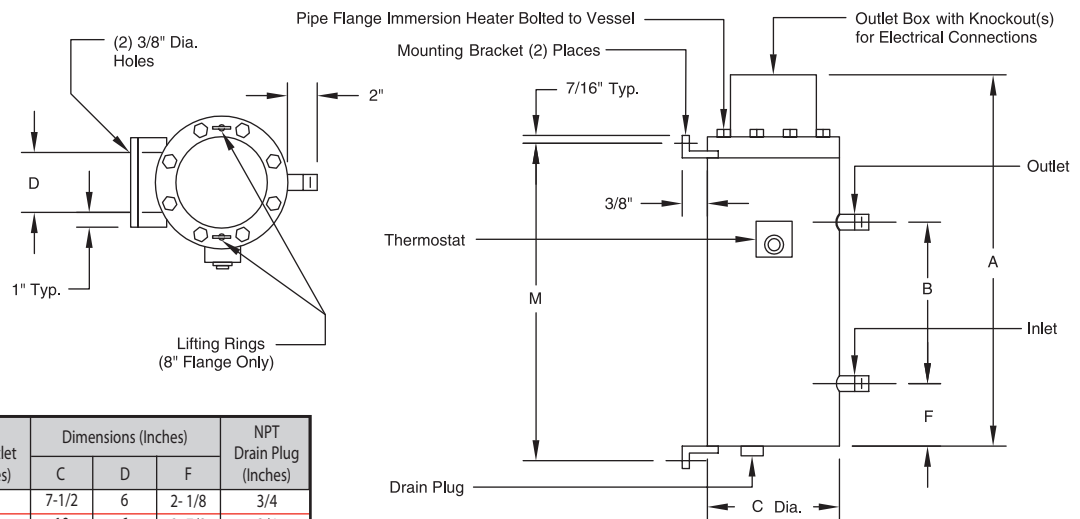
## Dimensional Drawings

**Figure 1**  
2-1/2" Pipe Thread Construction



See pages 18-24 for A, B, M Dimensions

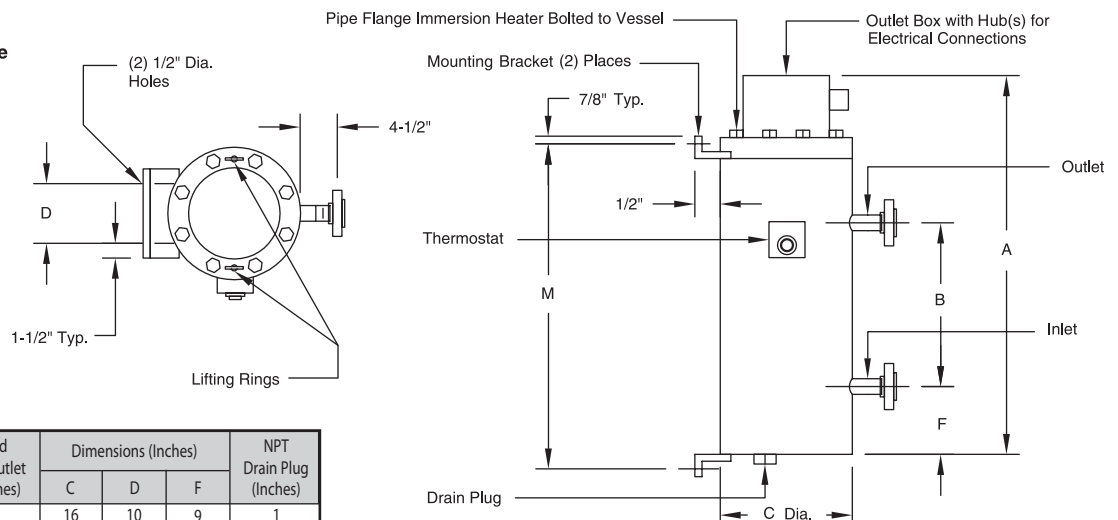
**Figure 2**  
3", 5" & 8" Flange Construction



Flange Size (Inches)	MNPT Standard Inlet/Outlet Nozzle Size (Inches)	Dimensions (Inches)			NPT Drain Plug (Inches)
		C	D	F	
3	1	7-1/2	6	2-1/8	3/4
5	2	10	6	2-7/8	3/4
8	2-1/2	13-1/2	9	7	1

See pages 18-24 for A, B, M Dimensions

**Figure 3**  
10", 12" & 16" Flange Construction



Flange Size (Inches)	150 lb. Flanged Standard Inlet/Outlet Nozzle Size (Inches)	Dimensions (Inches)			NPT Drain Plug (Inches)
		C	D	F	
10	3	16	10	9	1
12	6	19	12	10	1-1/2
16	6	23-1/2	15	11	1-1/2

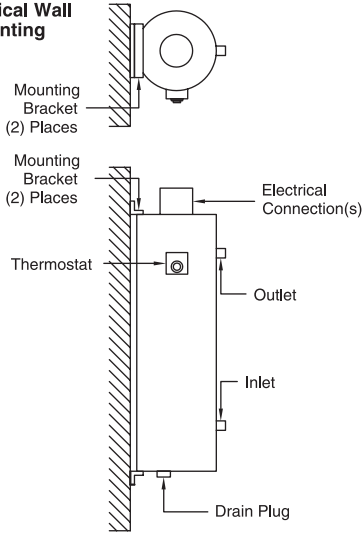
See pages 16-22 for A, B, M Dimensions

# Circulation Heaters

## Mounting Options

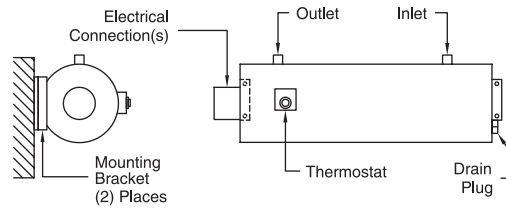
**Figure 4**

**Vertical Wall Mounting**



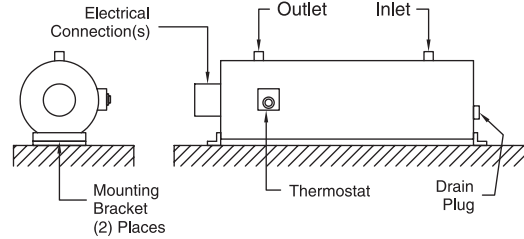
**Figure 6**

**Horizontal Wall Mounting**



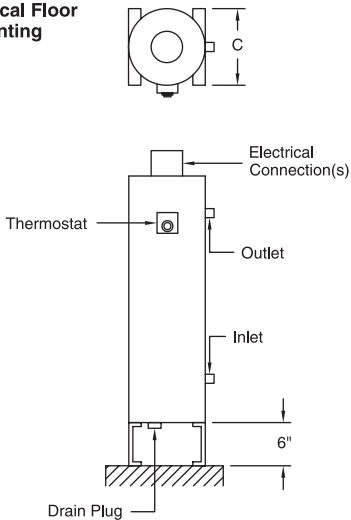
**Figure 7**

**Horizontal Floor Mounting**



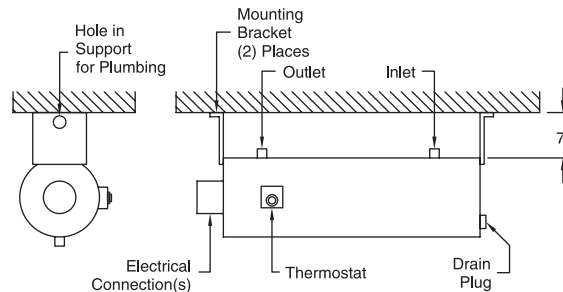
**Figure 5**

**Vertical Floor Mounting**



**Figure 8**

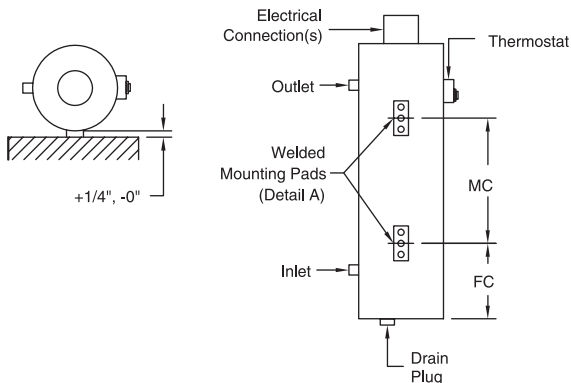
**Horizontal Ceiling Mounting**



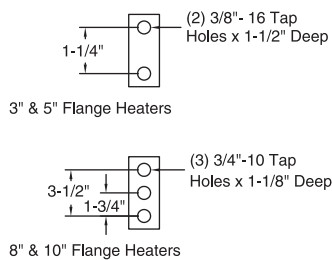
Not available for 8" flange heaters and larger.

**Figure 9**

**Mounting Pads**



**Detail A**



Not available for 10" flange heaters and larger.  
Note: Thermostat must always be in a vertical position.  
Specify if horizontal heater mounting is required.