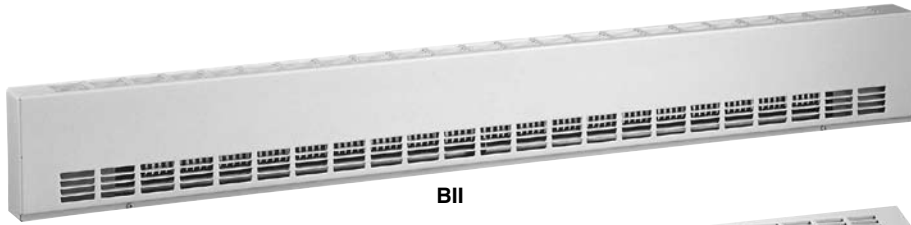


Industrial Sill-Height Convectors Industrial Sloped Top Sill-Height Convectors



BII



BISI

Applications

- Air, Rail or Bus Terminals
- Auditoriums
- Corridors
- Entryways
- Foyers
- Hallways
- Lobbies
- Offices

The BII/BISI industrial sill-height convectors (also known as draft barriers) are designed to fit under large windows to prevent cold down drafts. The heaters are ideal for heavy traffic areas with high heating requirements.

- **Installation Options:** Units may be mounted to the wall flush on the floor or on pedestals. Custom lengths and blank sections and inside or outside corners are available for wall-to-wall installations. Units can be ordered with smooth painted finish when the back of the heater is visible.
- **Length Options:** Heaters can be installed singularly in lengths from 20 inches to 103 inches or joined end to end for complete perimeter heating.
- **Added Safety:** The sloped-top cabinet on the BISI prevents objects from being set on top of the heater, which can restrict airflow and cause overheating.
- **Choice of Colors:** Heaters can be matched to any décor. White or almond is standard and a wide range of optional colors and custom finishes are also available.

Standard Construction Features

Heating Elements – Stainless steel elements with aluminum fins float on high temperature nylon bushings for quiet operation.

Housing – Cabinet is constructed of 18-gauge steel with a 16-gauge steel front cover. The unit has a polyester powder paint finish in white or almond. End caps are provided on all units.

Inlet/Outlet Grilles – The fresh air inlet grille is located on the front of the unit. The outlet grille has openings less than 0.25 inches to discourage tampering with the heating element (pencil-proof).

Built-in Controls – Linear limit, automatic reset thermal cutout.

Electrical Connection – Each baseboard heater has a junction box located on both ends and a built-in full length wireway.

Installation Requirements – Field or factory-installed low voltage relay and thermostat kits fit into the right-hand junction box only.

Industrial Sill-Height Convactor Industrial Sloped Top Sill-Height Convactor

Factory Built-in Options

Code	Description
A	Bottom Air Inlet
D3	Disconnect Switch, 277V, Double-pole, 20 Amp
L	Custom Length
M1	High Altitude Automatic Cutout
R1	24V Relay, Single-pole, 240V, 22 Amp; 277V, 19 Amp
R2	24V Relay with Transformer, 240V, 22 Amp; 277V, 19 Amp
R6	Pneumatic Relay, 480V, 20 Amp
R7	Triac Proportional Relay, 277V Max., 2500W Max.
S	Smooth painted finish on heater back
T1	Tamperproof Thermostat, Single-pole, 240V, 25 Amp; 277V, 10 Amp
T2	Tamperproof Thermostat, Double-pole, 240V, 25 Amp; 277V, 10 Amp
T5	Adjustable Thermostat, Single-pole, 240V, 25 Amp; 277V, 10 Amp
T6	Adjustable Thermostat, Double-pole, 240V, 25 Amp; 277V, 10 Amp

Field-Installed Options

(shipped loose for field installation into heater)

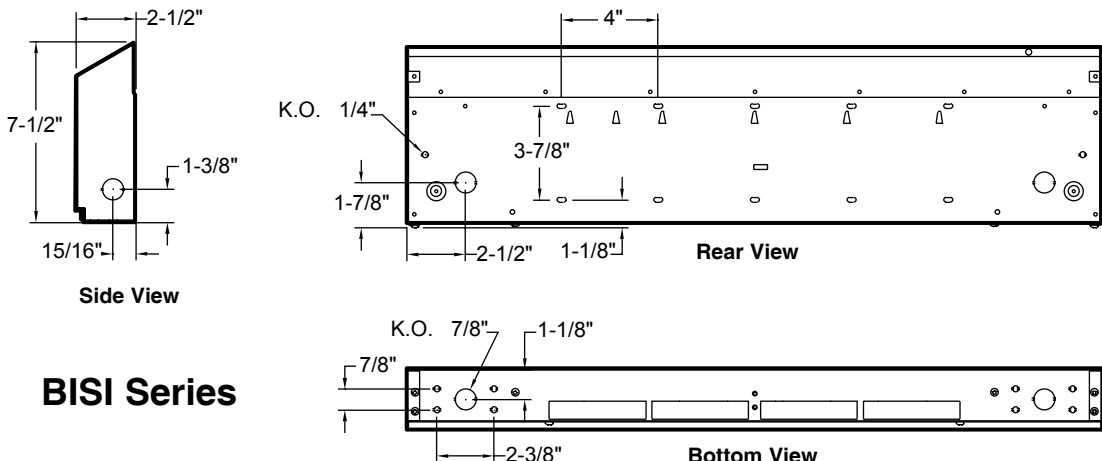
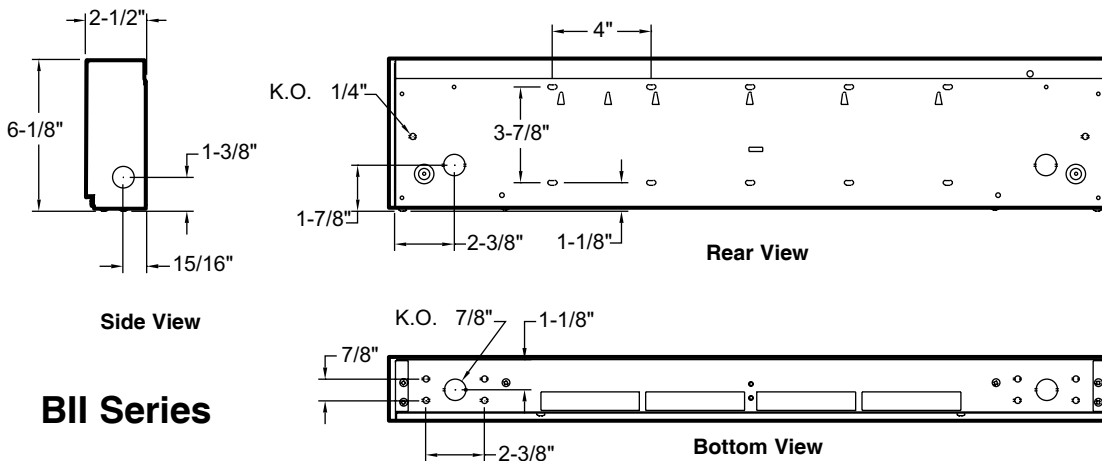
Catalog Number	Description
907-124597(1)	Inside Corner
907-124598(1)	Outside Corner
907-124599	Round Pedestal Kit, 3-5", Qty=2
907-169807	Square Pedestal Kit, 2", Qty=2
907-124600(1)	Splice Plate 2" Long
907-124601(1)	Contour Splice Plate for Code A (Bottom Air Inlet) and/or Heater with Pedestals
907-124602	24V Relay Kit, 240V, 22 Amp; 277V, 25 Amp
907-124603	24V Relay Kit with Transformer, 120V, 22 Amp
907-124604	24V Relay Kit with Transformer, 208V, 22 Amp
907-124605	24V Relay Kit with Transformer, 240V, 22 Amp
907-124606	24V Relay Kit with Transformer, 277V, 19 Amp
907B-XXX(1)	Blank Section (specify length in inches-XXX)

(1) Change 907 prefix to 905 for BISI.

Standard colors - Add W for white finish or A for almond finish to the end of part number.

Special or custom colors - See inside back cover for color codes to be added to end of part number.

Remote Room Thermostat – See page 99



Industrial Sill-Height Convactor Industrial Sloped Top Sill-Height Convactor

BII Model: 907U (Flat Top)

BISI Model: 905U (Sloped Top)

How to order: Model + Heater Code with color code + Options

(example 905U01200NW-1708-T5)

Length In. (mm)	Density		Watts	Heater Code						Watts at 240/208V	Heater Code		Weight Lbs (kg)	
	W/Ft	W/m		120V (1 Ph)	Amps	208V (1 Ph)	Amps	277V (1 Ph)	Amps		240/208V (1 Ph)	Amps	BII (Flat)	BISI (Sloped)
28.8 (731)	100	330	200	00200B‡-731	1.7	00200C‡-731	1.0	—	—	200/150	00200V‡-731	0.8/0.7	10.4 (4.8)	11.6 (5.3)
	150	490	300	00300B‡-731	2.5	00300C‡-731	1.4	00300N‡-731	1.1	300/225	00300V‡-731	1.3/1.1		
	200	650	400	00400B‡-731	3.3	00400C‡-731	1.9	00400N‡-731	1.4	400/300	00400V‡-731	1.7/1.4		
	275	900	500	00500B‡	4.2	00500C‡	2.4	00500N‡	1.8	500/375	00500V‡	2.1/1.8		
38.8 (986)	100	330	300	00300B‡-986	2.5	00300C‡-986	1.4	00300N‡-986	1.1	300/225	00300V‡-986	1.3/1.1	12.7 (5.8)	15.1 (6.9)
	150	490	450	00450B‡-986	3.8	00450C‡-986	2.2	00450N‡-986	1.6	450/338	00450V‡-986	1.9/1.6		
	200	650	600	00600B‡-986	5.0	00600C‡-986	2.9	00600N‡-986	2.2	600/450	00600V‡-986	2.5/2.2		
	275	900	750	00750B‡	6.3	00750C‡	3.6	00750N‡	2.7	750/563	00750V‡	3.1/2.7		
49 (1246)	100	330	400	00400B‡-1246	3.3	00400C‡-1246	1.9	00400N‡-1246	1.4	400/300	00400V‡-1246	1.7/1.4	14.9 (6.8)	18.7 (8.5)
	150	490	600	00600B‡-1246	5.0	00600C‡-1246	2.9	00600N‡-1246	2.2	600/450	00600V‡-1246	2.5/2.2		
	200	650	800	00800B‡-1246	6.7	00800C‡-1246	3.8	00800N‡-1246	2.9	800/600	00800V‡-1246	3.3/2.9		
	275	900	1000	01000B‡	8.3	01000C‡	4.8	01000N‡	3.6	1000/750	01000V‡	4.2/3.6		
58.6 (1486)	100	330	500	00500B‡-1486	4.2	00500C‡-1486	2.4	00500N‡-1486	1.8	500/375	00500V‡-1486	2.1/1.8	17.0 (7.7)	22.0 (10.0)
	150	490	750	00750B‡-1486	6.3	00750C‡-1486	3.6	00750N‡-1486	2.7	750/563	00750V‡-1486	3.1/2.7		
	200	650	1000	01000B‡-1486	8.3	01000C‡-1486	4.8	01000N‡-1486	3.6	1000/750	01000V‡-1486	4.2/3.6		
	275	900	1250	01250B‡	10.4	01250C‡	6.0	01250N‡	4.5	1250/938	01250V‡	5.2/4.5		
67.3 (1708)	100	330	600	00600B‡-1708	5.0	00600C‡-1708	2.9	00600N‡-1708	2.2	600/450	00600V‡-1708	2.5/2.2	18.8 (8.5)	25.0 (11.4)
	150	490	900	00900B‡-1708	7.5	00900C‡-1708	4.3	00900N‡-1708	3.2	900/675	00900V‡-1708	3.8/3.2		
	200	650	1250	01250B‡-1708	10.0	01250C‡-1708	5.8	01250N‡-1708	4.3	1250/938	01250V‡-1708	5.0/4.3		
	275	900	1500	01500B‡	12.5	01500C‡	7.2	01500N‡	5.4	1500/1125	01500V‡	6.3/5.4		
76.6 (1945)	100	330	700	00700B‡-1945	5.8	00700C‡-1945	3.4	00700N‡-1945	2.5	700/525	00700V‡-1945	2.9/2.5	20.8 (9.4)	28.3 (12.8)
	150	490	1050	01050B‡-1945	8.8	01050C‡-1945	5.0	01050N‡-1945	3.8	1050/788	01050V‡-1945	4.3/3.8		
	200	650	1400	01400B‡-1945	11.7	01400C‡-1945	6.7	01400N‡-1945	5.1	1400/1050	01400V‡-1945	5.8/5.0		
	275	900	1750	—	—	01750C‡	8.4	01750N‡	6.3	1750/1313	01750V‡	7.3/6.3		
85.4 (2168)	100	330	800	00800B‡-2168	6.7	00800C‡-2168	3.8	00800N‡-2168	2.9	800/600	00800V‡-2168	3.3/2.9	22.7 (10.3)	31.3 (14.2)
	150	490	1200	01200B‡-2168	10.0	01200C‡-2168	5.8	01200N‡-2168	4.3	1200/900	01200V‡-2168	5.0/4.3		
	200	650	1600	—	—	01600C‡-2168	7.7	01600N‡-2168	5.8	1600/1200	01600V‡-2168	6.7/5.8		
	275	900	2000	—	—	02000C‡	9.6	02000N‡	7.2	2000/1500	02000V‡	8.3/7.2		
94.2 (2393)	100	330	900	00900B‡-2393	7.5	00900C‡-2393	4.3	00900N‡-2393	3.2	900/675	00900V‡-2393	3.8/3.2	24.6 (11.2)	34.4 (15.6)
	150	490	1350	—	—	01350C‡-2393	6.5	01350N‡-2393	4.9	1350/1013	01350V‡-2393	5.6/4.9		
	200	650	1800	—	—	01800C‡-2393	8.7	01800N‡-2393	6.5	1800/1350	01800V‡-2393	7.5/6.5		
	275	900	2250	—	—	02250C‡	10.8	02250N‡	8.1	2250/1688	02250V‡	9.4/8.1		
103.4 (2625)	100	330	1000	01000B‡-2625	8.3	01000C‡-2625	4.8	01000N‡-2625	3.6	1000/750	01000V‡-2625	4.2/3.6	26.6 (12.1)	37.6 (17.1)
	150	490	1500	—	—	01500C‡-2625	7.2	01500N‡-2625	5.4	1500/1125	01500V‡-2625	6.3/5.4		
	200	650	2000	—	—	02000C‡-2625	9.6	02000N‡-2625	7.2	2000/1500	02000V‡-2625	8.3/7.2		
	200	650	2250	—	—	02250C‡-2625	10.8	02250N‡-2625	8.1	2250/1688	02250V‡-2625	9.4/8.1		
	275	900	2500	—	—	02500C‡	12.0	02500N‡	9.0	2500/1875	02500V‡	10.4/9.0		

Other single-phase voltages available, consult factory.

‡Standard colors - Add W for white finish or A for almond finish to the end of catalog number when ‡ is indicated.

Special or custom colors - See inside back cover for color codes to be added to end of catalog number where ‡ is indicated.